

CLASSIC 2 PLUS



LITHIUM BATTERY

- 5 YEAR WARRANTY
- NO MAINTENANCE
- ALUMINUM PACK

BODY & CHASSIS

TPO injection moulding front and rear body

DIMENSIONS

Classic 2 plus: 94"x55"x72"

POWER

Lithium battery
 48V 6.3KW AC motor
 400 AMP Evolution AC Controller
 25mph max speed
 25A Evolution on-board charger

FEATURES

- Luxury two tone seat
- Color matched Dash with four cup holders / cell phone holder
- 14" Alum Wheel with color insert/215/35R14 Radial DOT Tire
- USB
- 9 inch touchscreen with back-up camera (Radio, Music, Movie, Speedometer, Bluetooth, Back-up camera, Car App connection)



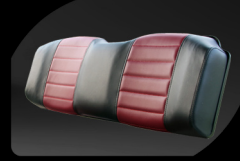
9 inch touchscreen with back-up camera



Color matched Dash with four cup holders/cell phone holder



14" Color matching Radial DOT Tire



Two tone seat



Luxury steering wheel

Color matching standard



Available color



EVOLUTION ELECTRIC VEHICLES INC

Add: 2620 Palisades Drive, Corona CA 92882
www.evolutionelectricvehicle.com



IMAGE FOR ILLUSTRATION PURPOSES ONLY

*Ask your local dealer about non-standard color options.